

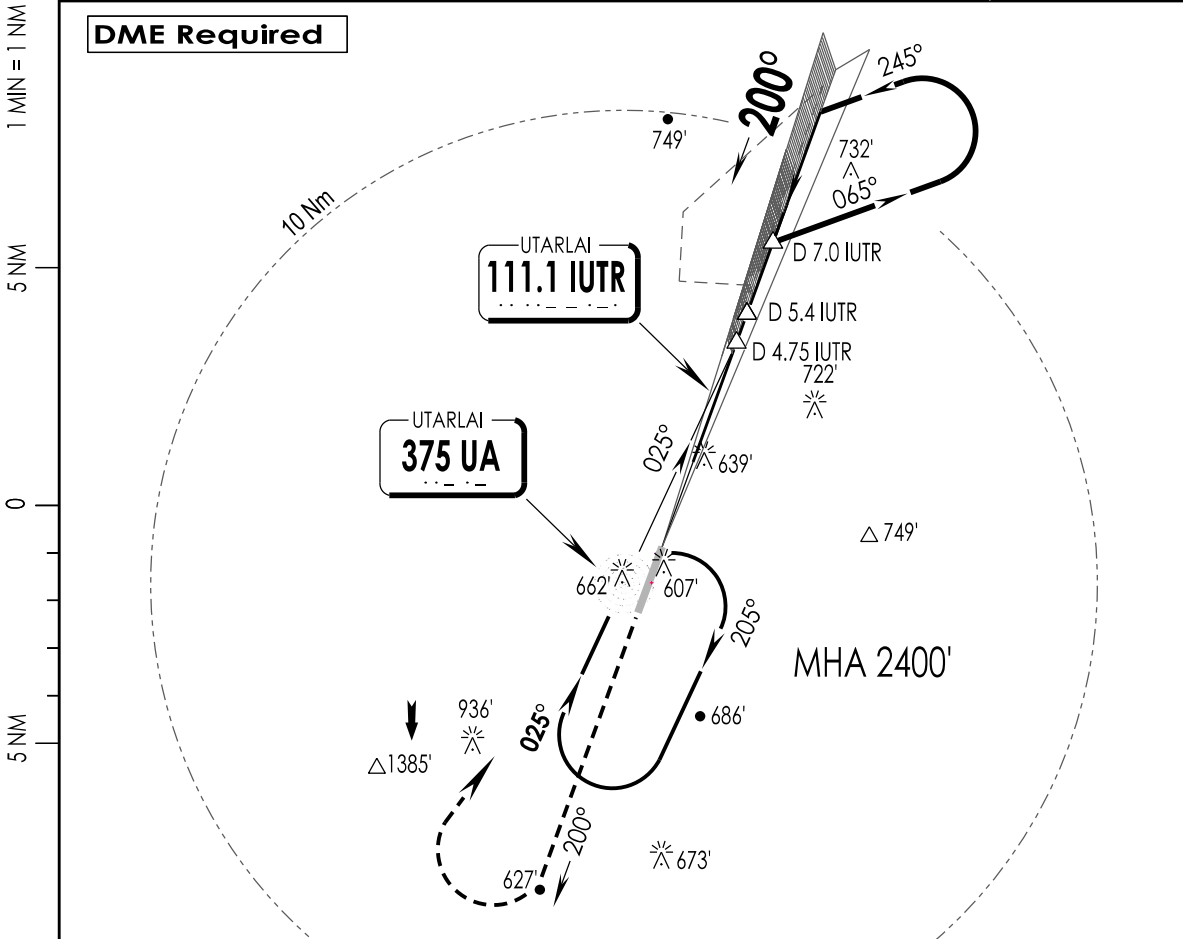
1-2

VIUT
UTTARLAI

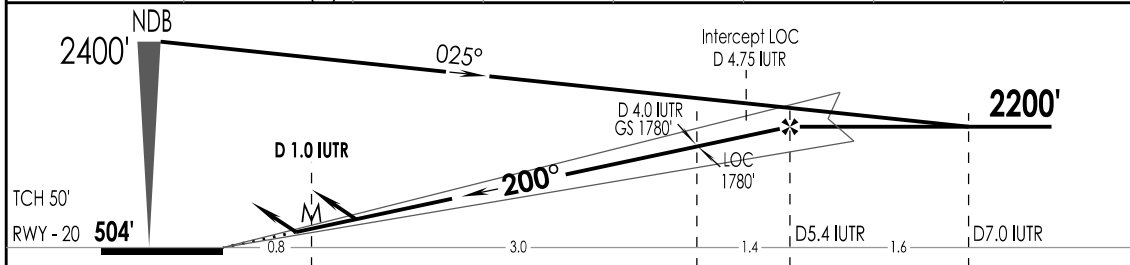
IAF
27 JUN 19

UTTARLAI, INDIA
ILS Y RWY 20

UTTARLAI Tower 123.2, VC, UC			UTTARLAI Approach 123.2, VC, UC		ATIS 114.5	3500'
NDB UA 375	LOC IUTR 111.1	FINAL Apch Crs 200°	GS D 4.0 IUTR 1780'	DA (H) 717' (213')	Apt Elev 505' RWY 504'	
MISSED APCH: Climb STRAIGHT ahead to 1600', then climbing Turn Right to join NDB hold at 2400' or as directed by ATC.						
Alt Set: hPa		Rwy Elev: 17 hPa	Trans level: By ATC		Trans alt: 4000'	MSA UA NDB



LOC (GS OUT)	IUTR DME	5.4	5.0	4.0	3.0	2.0
	ALTITUDE (ft)	2200	2090	1780	1460	1140



GND SPEED KTS	80	100	120	140	160	180	↑ 1600'	→ 2400'
GRADIENT 5.24 %	425	531	637	743	849	955		

STRAIGHT-IN LANDING RWY 20				CIRCLE - TO - LAND				
ILS		LOC (GS OUT) CDFA		Max Kts	MDA (H)	VIS		
DA (H)	717' (213')	MDA (H)	890' (385')					
FULL	ALS OUT	FULL	ALS OUT	100	1170' (665')	3300m		
A				135				
B	RVR 550m	RVR 1200m	RVR 1100m	180			1330' (825')	3800m
C				205				
D								

LIGHTING : CAT-II (20), CL15M(02/20), HIRL 60 M (02/20), TL (02/20), HIALS (20), PAPI (02L/20R), SALS (02)

CHANGES : NEW PROCEDURE IPDC, DTE OF OPS (T & H)

SURVEY PERIOD : 2015-16